

LEDBURY CARNIVAL
Bank Holiday Monday 25th August 2014
40 YEARS OF LEDBURY CARNIVAL
ENTRY FOR CARNIVAL PROCESSION

The Procession will start from Ledbury Rugby Club, travel up New Street to the Top Cross, through the High Street, along the Homend into Orchard Lane, finishing at the Primary School (1.6 miles). Entrants must arrive at Ledbury Rugby Club car park by 10am to allow time for judging and the procession to be marshalled for a 12.00 noon start. On arrival please book in at the desk.

The theme is 40 Years of Ledbury Carnival, although you may choose a different theme for your entry. Safety on a float must be paramount, particularly if there are young children aboard, one person should be nominated as responsible for safety. Water pistols are not allowed. If you are able to have music on your float, it all adds to the day!! All entries will be provided with official collection buckets for raising money for the Carnival and local organisations, all buckets and any money collected must be handed to one of the marshals at the end of the procession. NO other collection buckets are permitted.

JUDGING – Entries will be judged under one of the following categories, and only one class may be entered by any one individual.

FANCY DRESS	CLASS 1	Children's Fancy Dress age up to 8 yrs	3 prizes	Total £75
	CLASS 2	Children's Fancy Dress age 8-16 yrs	3 prizes	Total £75
	CLASS 3	Senior Fancy Dress	3 prizes	Total £75
FLOATS	CLASS 4	Best Bicycles, Pram, or hand propelled vehicle/walking group	3 prizes	Total £75
	CLASS 5	Best Equine Entry	3 prizes	Total £75
	CLASS 6	Best Small Float	3 prizes	Total £160
FLOATS	CLASS 7	Best Large Float	3 prizes	Total £160
	CLASS 8	Best Children's Float (Large or Small)	3 prizes	Total £160

Class of Entry _____ Length of Vehicle (If Applicable) _____

Title of Entry _____

Name _____ Organisation _____

Address _____

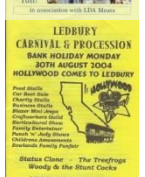
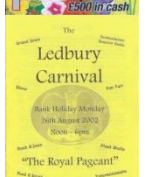
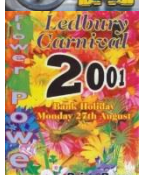
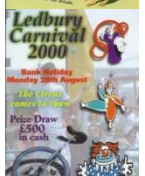
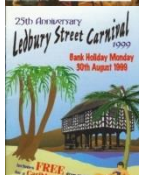
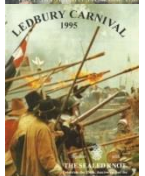
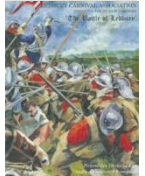
Telephone _____ Mobile _____

Please send form to... **Pauline Bates, 33 Viking Way, Ledbury, HR8 2DU**

Any enquiries please call 01531 630034 Email: procession@ledburycarnival.co.uk

I have received and understood the Ledbury Carnival Health and Safety Regulations..

Signed _____ Date _____



Ledbury Carnival Association

Safety Policy Statement

The Ledbury Carnival Association recognises and accepts its duty for providing, so far as is reasonably practicable, a safe environment for all who take part in the procession. This includes ensuring that the procession is not a danger to spectators.

The Carnival Association requires that all persons taking part in the procession accept and take their share in the duties and responsibilities contained within this policy statement and the provisions below.

Safety Policy Provisions

1. An adult representative of each entry must register with the committee and sign for receipt and understanding of these provisions. This representative will be the 'responsible adult' for their entry and will enforce the following provisions.
2. The appointed 'responsible adult' must not be the driver of any vehicle.
3. Pedestrian members of the procession must keep clear of motorised vehicles in the procession. Adults must accompany children to ensure that they maintain appropriate clearance.
4. It is the responsibility of the driver to ensure that any vehicle taking part in the procession is fit for that purpose. The Carnival Association reserve the right to exclude any vehicle it deems unsafe, but this does not remove any responsibility from the driver for ensuring safety.
5. Drivers are responsible for ensuring that all road traffic regulations have been met for the vehicle, e.g. Tax, MOT, Insurance, Fire Extinguishers, etc.
6. The driver must ensure that-all fittings, e.g. scenery, chairs, podiums, etc are attached or located such that they do not pose a risk to a third party.
7. No passengers will hang feet over the edge of a vehicle side.
8. The 'responsible adult' must ensure that no passengers on a vehicle approach the edge of the vehicle. Suitable ropes, holding points, seating, or harnesses should be available for all passengers.
9. Any restraint system fitted to a vehicle must be 'fit for purpose'.
10. Motorised vehicles must attempt to keep moving at all times and must not exceed 5 miles per hour.
11. A smoking ban operates at all points in the procession.
12. An alcohol ban operates at all points in the procession. The Carnival Association reserves the right to exclude any person from the procession if in its opinion that person is suffering from the effects of alcohol.
13. A drugs ban operates at all points in the procession, The Carnival Association reserves the right to exclude any person from the procession if in its opinion that person is suffering from the effects of any drug.
14. Any person taking prescription medication may only enter the procession on the advice of their Doctor. Where appropriate such persons must ensure that an adult, who is fully aware of their condition and any emergency actions that maybe required, accompanies them.