

# PROGRAMME OF EVENTS FOR 2010

*Please note times may vary depending  
on unforeseen circumstances on the day*

*Hosted by Hospital Radio, Hereford*

## HIGH STREET

1:30	Reinforced	(Local Band)
2:45	Take That	(Tribute Act)
4:30	Dynamos	(Local Band)

## St Katherine's Car Park

1:40	Puppet Show
2:10	Scottish Pipe Band
2:50	Magic Show
3:20	Strictly Dance School
4:00	Puppet Show
4:30	Samba Band
5:10	Magic Show

# LEDBURY CARNIVAL ASSOCIATION PROUDLY PRESENTS A Transport & Travel Carnival



**Bank Holiday Monday  
30th August 2010**



Please visit our website at  
[www.ledburycarnival.co.uk](http://www.ledburycarnival.co.uk)

## WELCOME

Ledbury Carnival and procession takes place every year on August Bank Holiday. This is our 36<sup>th</sup> Carnival.

### ***The theme for 2010: TRANSPORT AND TRAVEL***

Ledbury Carnival is a community event and its aim is to provide an afternoon of entertainment and pleasure for all. Local charities and clubs use this Carnival for fundraising, so we hope you will give generously.

### **THANK YOU TO ALL OUR SPONSORS**

Abbotsfield Funeral Directors – Brandon Hire  
Celebrations - Eager Electrical – Eastnor Castle  
The Feathers Hotel - J.B.Gaynan & Son  
Hawcutt Funeral Directors – Ledbury Van Hire  
Leaddon Vale Vet Centre - H J Pugh – Ledbury Town Council  
Ledbury Preserves - Ledbury Reporter  
Ledbury Rugby Football Club - Orme, Dykes & Yates  
One Stop Shop - Sequani – Talbot Hotel  
Tourist Information Centre – Weston's Cider

### **THANK YOU TO ALL OUR HELPERS**

Ben & Melissa Boyle for the Carnival Window Display  
ABE Transport for the lorries in the High Street  
Hardman Security Services for manning the Barriers  
Ledbury Rotary Club for Park 'n' Ride Scheme  
Hereford & Worcester Fire Brigade  
West Mercia Police – Herefordshire Council  
Thank you to all the Ledbury Traders who dress their shops and windows, those who generously donate the raffle prizes; the individuals, companies and organisations that give their help, time, expertise and effort, and those who lend equipment free of charge.

**THIS PROGRAMME  
WAS PRINTED BY**

**PAUL CLARK  
PRINT**

A5/A4 BOOKLETS  
A6 TO A3 LEAFLETS  
LETTERHEADS  
BUSINESS CARDS  
COMPLIMENT SLIPS  
N C R SETS

*Tel: 01787 237 801*  
*Fax: 01787 237 733*  
*www.paulclarkprint.co.uk*

**METHODIST  
CHURCH**

**THE HOMEND**  
*opposite Old Cottage Hospital*

**WELCOMES ALL  
12 Noon to 4:00pm  
ON CARNIVAL DAY**

**FOR COFFEE - A CHANCE  
TO REST YOUR FEET  
AND AN OPPORTUNITY TO  
LOOK ROUND THE BUILDING  
AND IT'S ALL FREE!!**



**EASTNOR  
CASTLE**

Fairytale Georgian castle in magical surroundings, with Deer Park, Lake and Arboretum. Inside this family home you'll find richly decorated Gothic interiors, fine art, Medieval Armour and much more...

### **Attractions**

Children's Adventure Playground  
Assault Course - Knight's Maze  
Children's Fun Worksheets  
Nature Trail - Tree Trail  
Lakeside & Woodland Walk  
Gift Shop - Tea Room  
Ice Cream Parlour

### **Forthcoming Events**

**Family Treasure Hunt**  
Sun 29<sup>th</sup> – Mon 30<sup>th</sup> August  
**Gun Dogs & Ferret Racing**  
Sun 5<sup>th</sup> September  
**Armour Day & Anglo Sikh  
Heritage Trail**  
Sun 12<sup>th</sup> September  
**Harvest Festival**  
Sun 19<sup>th</sup> September  
**Steam Fair**  
Sun 26<sup>th</sup> September  
**Deer Park  
Firework Championships**  
Sat 4<sup>th</sup> September

**Call 01531 633160  
or visit  
www.eastnorcastle.com**

## ADVERTISERS FOR 2010

Hawcutt - Funeral Directors
Leaddon Vale Veterinary Group
Simon Gent - Kitchens/Bathrooms
Westons - Cider & Perry
DF Legal Solicitors LLP
Eagers Electrical - Superstore
LDA Meats - Fresh Meat Products
Car-Air Mobile Air Conditioning
Ledbury Welding & Engineering
The Guild of Herefordshire Craftsmen
Wyatt's - Home & Garden
Stooke Hill & Walshe
M&M Ices (Ice Cream Specialists)
Ledbury 'Original' Fencing & Paving
Crowthers - Business Accountants
Shane Howells Ltd
John Teale Photography
Ancor Flexibles
Ledbury Methodist Church
Paul Clark Printing
Spar (There for you)
Eastnor Castle
Ledbury Horticultural Show
Forest of Dean Craft Workers Guild
The Talbot Inn
Orme & Slade Solicitors
Make My Day - Wedding Car Hire
McQuaid Productions
Firebrand Radio

*Advertising & Editorial*

**JOHN MCQUAID**

**Tel/Fax (01531) 634044**

*E: enquiries@jcmcquaid.co.uk*

Please visit my NEW website at  
[www.mcquaidproductions.co.uk](http://www.mcquaidproductions.co.uk)

### DISCLAIMERS

Every care is taken to ensure that all the Advertisements appear correct and are suitable

**THE INFORMATION IN THIS PROGRAMME IS CORRECT AT TIME OF 'PRINT'**

**The use of this booklet to contact any of the Advertisers is permitted.**

All the Businesses, Traders, Caterers, Charities, Groups, Artists, Rides, and Amusements mentioned in this programme attend the Carnival of their own free will. The Stalls Manager or the Carnival Association holds no responsibility for them not attending the day of the Carnival. Additional stalls, other than the ones mentioned that are officially booked in this programme may appear on the Carnival on the day is by agreed by the 'Stalls Manager'

## **CHARITIES FOR 2010**

*These groups will be attending at this year's Carnival so please support them by giving generously*

**Catholic Women's League**

**Ledbury Scouts\Cubs**

**Holy Trinity Church**

**Eastnor Cricket Club**

**Busy Bees @ LPS**

**Hfd & Worcs Animal Rescue**

**Community Voluntary Action**

**Ledbury Bowls Club**

**Birch Tree Dog Rescue**

**Guide Dogs for the Blind**

**Women's Institute (Parkway)**

**The Heartbeat Years**

**Gurkha Action Fund (UKNDA)**

**Armed Forces Collectables(UKNDA)**

**Phoenix Children's Foundation**

# Car-Air *Limited*



Fault Code Clearing on all Onboard ECU Systems  
Remote Programming and Key Coding  
Deodorising and Antibacterial Service  
Car, Commercial, Agricultural and Plant Services  
ON-SITE Air Con Service and Repairs

Tel 01531 631400 Mob 07747 672833

Or email us at [staycool@carair.freeserve.co.uk](mailto:staycool@carair.freeserve.co.uk)



## Hawcutt

### Funeral Directors

**Tel: 01531 632084**

80 The Homend - Ledbury - Herefordshire HR8 1BX

*Providing a Sympathetic and Dignified Service  
Day and Night Service available Private Chapel of Rest*

*Providers of the Fairways Funeral Plan*

*A nationally recognised plan at a lower price*

*If you require further details or a brochure, then contact us*

**A local Traditional Business**

**Established 1980**

## JOHN TEALE Photography

[www.johntealephotography.co.uk](http://www.johntealephotography.co.uk)

Studio : 01531 636194



Wishing you a Fun Day in the Sun  
at

## Ledbury Carnival



*A fun day out for all the family at*

*Westons Visitor Centre ...*

Public Mill Tours - 11.00am, 12.30pm and 2.30pm  
Free Tastings (adults only)

Traditional and Rare Breeds Farm Park

Shire Horse Dray Rides

Children's Play Area

Cider and Gift Shop

Scrumpy House Restaurant and Bottle Museum Tea Room

*For further information contact us on*  
**01531 660108**



Westons Cider, The Bounds, Much Marcle, Ledbury,  
Herefordshire HR8 2NQ

Tel: 01531 660108 [www.westons-cider.co.uk](http://www.westons-cider.co.uk)

## **CHARITIES FOR 2010**

*These groups will be attending at this year's Carnival  
so please support them by giving generously*

**Hearing Dogs for the Deaf**

**Macmillan Cancer Support**

**Muscular Dystrophy Group**

**Cats Protection League**

**Multiple Sclerosis Society**

**National Childbirth Trust**

**Parkinson's Disease Society**

**Noah's Arc Trust**

**Water Aid Foundation**

**Animal Samaritans**

**Shaw Trust (*Ledbury Shop*)**

**Malvern Lions Club**

**Evergreen Club**

**R S P C A**

**Samaritans**

**Catholic Church**

# LEDBURY

HORTICULTURAL SOCIETY

## **FLOWER & VEGETABLE SHOW**

August Bank Holiday Monday  
TO BE HELD AT

**LEDBURY COMMUNITY HALL**

Opposite the Swimming Pool - Lawnside Road

*THIS YEARS CLASSES NOW INCLUDE*

**POT PLANTS - DAHLIAS - FLOWERS**

**VEGETABLES - HANDICRAFTS**

**PHOTOGRAPHY - COOKERY - FRUIT**

**Allotments: Flowers & Vegetables**

Childrens Entries: 'FREE' before 9.30am on day

***PUBLIC ENTRY: 50P***

Open to the Public from 12 noon

Refreshments available from 2pm

*ALL PROCEEDS GO TO LOCAL CHARITIES*

*Entry forms will be available from*

***Rodways and The Chocolate Box***

Entries close on Friday 28th August

To Enter call : ***LES THICK***

Tel : 01531 632489 after 6pm

## Traders \ Businesses

Jones Toy Tombola

Phoenix Trading

Kenya Kraft's

Byzantium Bazaar

Bullar's Prints

Forever Living Products

Taynton Farm Shop

Gibbs Wooden Toy Trains

All Plants Wholesale

Blue Fuchsia Cupcakes

Battens Sale Table

Janet's Toy Tombola

Enchanted Fairies

Dani's Jewellery

Organic Fruit & Veg

Classic LP's

# The Talbot Inn



**We all came on the Wadworth Dray  
To the Carnival - You can come on foot**

New Street, Ledbury, Herefordshire HR8 2DX

Phone: 01531 632963

Fax: 01531 633796

The Talbot Inn [www.talbotinnledbury.co.uk](http://www.talbotinnledbury.co.uk)

Wadworth [www.wadworth.co.uk](http://www.wadworth.co.uk)

Email [talbot.ledbury@wadworth.co.uk](mailto:talbot.ledbury@wadworth.co.uk)



*A taste of Wadworthshire*

## Traders \ Businesses

Face painting & Hair Braiding  
Amos Fashions Vicky's Bazaar  
Malcolm's Carpets & Rugs  
Fraz's Mobiles/Accessories  
Keith's Computer Accessories

## Catering Units

Ramshaw's Catering  
Gage Catering LDA Meats  
Pancakes Galore M & M Ices  
Jones Costa Coffee  
Pedricks Sweets Kiosk  
Hels' Kitchen  
Danter's Catering  
Issac's Doughnuts  
Smart's Sweets Kiosk



## FOREST OF DEAN CRAFT GUILD



We will be exhibiting in  
St Katherines Hall  
Monday 30th August  
10am to 5pm  
FREE ADMISSION

*Wooden Gifts Water Colours*  
*Assorted Cards Foam Crafts*  
*Country Style Fabrics Crouchet*  
*Silk Scalves Photography*  
*Dolls Houses & Garden Furniture*  
Refreshments supplied by  
The Womens Institute  
[www.forestofdeancraftguild.co.uk](http://www.forestofdeancraftguild.co.uk)

## Rides / Amusements

Danters Chair-O-Planes

Hemming's Amusements

Bouncy Castle \ Swing Chairs

Hoopla \ Inflatable Slide

Barleys & Son

K2 Giant Slide \ Biff & Bash

Blanchard's Gyroscopes

Bouncy Business.com

Gladiator / Adults & Kids Sumo

Pedrick Amusements

Mini Quest \ Helter Skelter

Playbed \ Dome

LOOBY LOO &

JOEY THE JUGGLER





**Exhibiting at**  
**LEDBURY**  
**MARKET**  
**HOUSE**

**OPEN DAILY**  
16th August to  
1<sup>st</sup> September  
10am – 4.30pm  
Free Admission

**Woodturning**

**Leatherwork**

**Shaker Boxes**

**Chairs**

**Jewellery**

**Ceramics**

**Resin Models**

**Pottery**

**Flower Craft**

PLEASE VISIT OUR WEBSITE  
[www.herefordcraftguild.org.uk](http://www.herefordcraftguild.org.uk)

**MOTORISTS WARNING**

PLEASE TAKE EXTRA CARE WHEN APPROACHING THE TOWN CENTRE AND THE ROSS ROAD. THERE ARE CHILDREN, ADULTS AND PETS RUNNING AND WALKING ABOUT IN ALL AREAS OF LEDBURY. PLEASE BE EXTRA VIGILANT, HAVE PATIENCE AND TAKE EXTRA CARE TO AVOID ANY KIND OF ACCIDENT.

**DISABLED PARKING**

THIS IS LOCATED IN MARKET STREET BY THE HOSPITAL TO USE ONE OF THESE PARKING SPACES. YOU MUST DISPLAY YOUR BLUE BADGE IN YOUR WINDOW OR YOUR VEHICLE WILL BE REMOVED.

**GENERAL PARKING**

YOU ARE REMINDED THAT ST. KATHERINE'S CAR PARK, BYE STREET CAR PARK AND LAWNSIDE CAR PARK ARE CLOSED FROM 6AM TO 7PM ON 30<sup>TH</sup> AUGUST. THEREFORE SPECIAL ARRANGEMENTS HAVE BEEN MADE OPPOSITE THE CAR BOOT SITE ON THE ROSS ROAD WHERE A PARK & RIDE SCHEME WILL OPERATE FROM.



## McQuaid Productions

*Does what it says on the tin. McQuaid Productions makes it happen.*

The one stop shop for events organisation, planning and execution on time, within budget and within schedule.

I use a novel approach to *Event Management* by using well defined *Event Templates*, tailoring the schedules to suit tastes, themes, tempos and tenure of the events, promotions and celebrations. Simply 'Call or Email' me today to book an appointment to arrange your *Events, Promotion or Celebration* — *Specialising in New Events*

Tel 01531 634044      [www.mcquaidproductions.co.uk](http://www.mcquaidproductions.co.uk)  
Mobile 07887 526377      [enquiries@jcmcquaid.co.uk](mailto:enquiries@jcmcquaid.co.uk)

[www.sevanes.co.uk](http://www.sevanes.co.uk)  
[www.eureconnect.co.uk](http://www.eureconnect.co.uk)  
[www.uknda.org](http://www.uknda.org)

[www.armedforcescollectables.com](http://www.armedforcescollectables.com)  
[www.roadmakerinn.co.uk](http://www.roadmakerinn.co.uk)

## Make My Day Wedding Car Hire



WEDDING PLANNING & ASSOCIATED SERVICES ALSO AVAILABLE

We supply a Chauffeur Driven **ICE BLUE JAGUAR** that makes for a truly extravagant travelling experience. We pride ourselves in a professional and friendly service. We also provide a touch of classical elegance to your Wedding or other special day. There is a complimentary bottle of Champagne for the Bride & Groom

Hilary Jones 07779 432289

To discuss your Special Occasion or event  
Website at: [www.make-my-day.org.uk](http://www.make-my-day.org.uk)

## M & M ICES

Mobile Ice Cream Vans



Catering for All Types of Events Throughout The County



Just Simply Wonderful

Quality Ice Cream Wholesalers

Suppliers of:



Available For Shops, Restaurants, Hotels etc.

**01432 277110**

07774 842050/51  
07889 106660

Unit 4, Rockfield Industrial Estate,  
Rockfield Road, Hereford

THE ORIGINAL

Ledbury  
Fencing & Paving  
Products Ltd

DOMESTIC & AGRICULTURE

Fence Erection & Maintenance  
Landscaping, Hedge & Tree Care  
Mini Digger Hire for Hedges & Stump  
Removal. Mowing & Turfing  
Many different factory direct paving  
and concrete products available  
Including the new  
Scarborough Mill Flag Stones &  
the 12ft Diameter Rotunda

For a friendly service ring Darren on  
01531 633440 or 07970 271351



24 HOUR EMERGENCY SERVICE  
TEL: 01531 632276



VETERINARY  
LEADON VALE  
CENTRE

LOWER ROAD TRADING ESTATE  
LEDBURY  
HEREFORDSHIRE HR8 2DJ  
Tel: 01531 632276  
www.leadonvale-vets.co.uk  
e mail: surgery@leadonvale.co.uk

Martin Leith Holly Tompsett Kate Perkins

## Stooke Hill & Walshe

ESTATE AGENTS - VALUERS  
AUCTIONEERS - SURVEYORS  
Offering a friendly, helpful service in the  
Sale &/or Purchase of your new home  
**FIND A TENANT SERVICE**

14 THE HOMEND - LEDBURY - HEREFORDSHIRE HR8 1BT



Tel: 01531 631177

www.stookehill&walshe.co.uk



## EAGER ELECTRICAL SUPERSTORE

Award Winning SONY Bravia LCD & LED Televisions  
Freeview HD Ready for Live High Definition TV  
Internet Connection for catch-up TV  
Freesat Models Available  
1080p HD

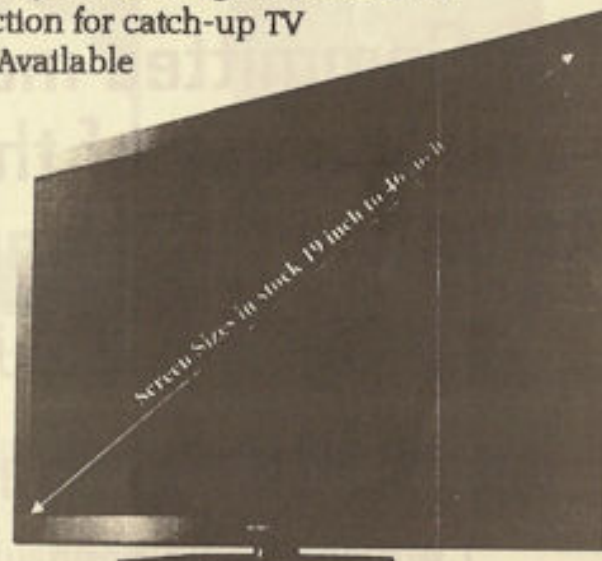
We Deliver

We Install

We Care



632045



**FREE 5 YEAR GUARANTEE  
ON ALL\***  
**SONY BRAVIA TELEVISIONS**  
FREE LOCAL DELIVERY  
FREE SET-UP & INSTALLATION  
PACKAGE DEALS, RENTAL & HP

\* Free 5 year guarantee on ALL Sony Bravia 26 inch and above

# LEDBURY CARNIVAL ASSOCIATION

The Committee meet on the  
2nd Monday of the Month  
At Ledbury Community Hall  
Lawnside Road at 8pm

If you would like to have a stall either a  
Catering - Business - Ride - Act  
Or be one of the 3 Acts on the main stage

Would you also like to ADVERTISE in this programme  
THEN CONTACT John McQuaid on  
01531 634044 e: enquiries@jcmcquaid.co.uk

 **crowthers**  
the business accountants



**Ian Cooke**



**Kelly Cummings**

Our main client services:

Accounts Preparation  
Business & Personal Tax  
Payroll & CIS Bureau  
Bookkeeping & VAT

Call Ian or Kelly for a free review  
**LEDBURY 01531 631500**  
**Crowthers Chartered Accountants**  
10 The Southend, Ledbury,  
Herefordshire, HR8 2EY

[www.crowthers.co.uk](http://www.crowthers.co.uk)

# SHANE Howells LIMITED

TOP QUALITY PRODUCTS

+  
ENERGY SAVING

+  
GERMAN PROFILE

+  
MADE IN ENGLAND

+  
APPROVED INSTALLERS

+  
NETWORK VEKA 10YR  
INSURANCE BACKED  
GUARANTEE

+  
VALUE FOR MONEY

If **you** are interested in any of  
our products listed, please feel  
free to contact us for

**A FREE FRIENDLY QUOTATION,**

**with 'NO PRESSURE' SALES**

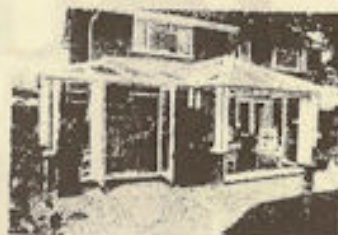
**Call (01531) 635338**

**Ledbury's longest established  
double-glazing Company**

VEKA

FENSA

CONSERVATORIES



SUN LOUNGES



WINDOWS



ROOFLINE



DOORS



## Carnival Committee 2010/11

Steve Clegg	Chairman \ Sponsorship	01531 633172
Peter Tattersall	Treasurer	01531 632021
Brenda Hill	Princess Co-ordinator	01531 633115
Jill Jupp	Minutes Secretary	01531 635129
Johnny Chan	Photographer \ Website	01531 630096
Pauline Bates	Procession Co-ordinator	07960 479502
Hilary Jones	Shop Window Competition \ Grand Draw	07779 432289
John McQuaid	Street Organiser \ Programme Editor	07887 526377

Andy Ward – Clive Jupp – Ken Davies – David Butler & Claire Moore

## Carnival Princesses 2010/11



**The New Princess is Charlotte Jeffreys-Hall**

**Her attendants are Karla Alvear and Isabella Bills-Geddes**

The Competition was held on Saturday 15<sup>th</sup> May

At the Burgage Hall, Church Lane, Ledbury

There were 10 girls taking part in this year's competition

# SIMON GENT LTD

## KITCHENS & BATHROOMS ELECTRICAL CONTRACTORS

We are a family based company with over 17 years experience in the design and installation of quality Kitchens and Bathrooms throughout the 3 Counties particularly around Ledbury, Colwall, Malvern and Hereford

Tel : 01531 634424

Fax : 01531 634426

Mob : 07973 634424

Email Address: [mail@simongent.com](mailto:mail@simongent.com)

Website: [www.simongent.com](http://www.simongent.com)



NatWest Bank Chambers  
Ledbury, HR8 1AB  
Tel: 01531 632226  
Fax: 01531 632481  
[www.ormeandslade.co.uk](http://www.ormeandslade.co.uk)

Good quality, friendly and cost effective advice in all areas of our practice, which include:-

- Residential property
- Commercial property
- Landlord and tenant
- Wills and probate
- Inheritance tax planning
- Family law
- Company and commercial matters
- Employment law
- Civil litigation



With 70 plants in 23 countries, Amcor Flexibles Europe & Americas, a division of Amcor, is a market leader and the world's largest supplier of flexible packaging. We deliver innovative packaging solutions and provide enhanced quality products for the food, beverage, pharma, personal care, medical and industrial markets. Its award winning approach towards sustainability makes Amcor Flexibles Europe & Americas the preferred partner for customers looking for responsible packaging solutions.

### Amcor Flexibles Ledbury

Lower Road Industrial Estate, Ledbury, Herefordshire HR8 2DJ

Tel: 01531 638638

[www.amcor.com](http://www.amcor.com)



# Wyatt's *home & garden*

Originally a cinema, Wyatt's home & garden was opened just over two years ago by Jane Wyatt. One of the main selling points of Wyatt's is Jane herself - her customers can't help coming back for the fantastic shopping experience and eclectic mix of quality products that makes Wyatt's so unique.

"At Wyatt's, our design team can give you information about their Interior Design Service and will happily discuss your project and give you ideas on how they can assist in adding style and interest to individual rooms or your entire home - not forgetting of course that all important room, the garden!"

We can source specific items of furniture from our eclectic mix ranging from antiques and collectables, Danish and French homeware, right through to garden accessories and many more exquisite items for both home and garden.

Other services we offer are furniture leasing, furniture restoration and even designing and dressing homes for property developers and photo shoots - furnishing and decoration to create a homely feel with a touch of elegance to ensure that all important sale.

Couples looking for an alternative to the run of the mill wedding list, are offered a wedding list service that is both unique and affordable."

## Wyatt's at Cobweb Cottage

Jane's interior design skills can be fully appreciated when renting Cobweb Cottage, a classic cottage brimming with character features - with everything in the cottage available to buy!

Situated in the heart of the beautiful market town of Ledbury, with secure parking nearby. The cottage also has the benefit of a small garden which is perfect for those sun downers and can sleep 4/6 guests with a minimum booking of 3 days.

**1 Bank House Bank Crescent Ledbury  
Herefordshire. HR8 1AA  
Tel No: 01531 633601**

*Wyatt's home & garden: [www.wyattsofledbury.co.uk](http://www.wyattsofledbury.co.uk)*

*Cobweb Cottage: [www.manorcottages.co.uk](http://www.manorcottages.co.uk)*

# Ledbury Welding & Engineering Ltd

## Serving the Community

**Manufacturers of Steel Bunded Storage Tanks**

**Commercial & Domestic : Diesel Fuels : heating Oils  
Galvanised Rainwater Tanks : Tank Hire  
Shot Blasting & Coatings : Full Installation Service**

## Marine Products Division

### Fabrication in Stainless Steel

**Ladders : Bathing Platforms : Grab Rails : Bollards  
Davits : Canopy Hoops : Polishing : Repairs  
Bespoke Fabrications**



**New Mills Industrial Estate, Leadon Way  
Ledbury, Herefordshire HR8 2SR**

**Tel 01531 632222**

**Fax 01531 634718**

**Email : [sales@lweltd.co.uk](mailto:sales@lweltd.co.uk)**

**Website : [www.lweltd.co.uk](http://www.lweltd.co.uk)**



" Elizabeth Hall "  
13 The Southend  
Ledbury  
Herefordshire  
HR8 2EY  
Tel: 01531 633222  
Fax: 01531 631666  
www.dflegal.com

**DF LEGAL LLP  
SOLICITORS**

Are pleased to  
support the  
Ledbury  
Carnival

Your local solicitors for an efficient friendly service

CONVEYANCING  
WILLS & PROBATE  
LITIGATION  
FAMILY LAW

COMMERCIAL  
EMPLOYMENT  
MOTORSPORT  
PLANNING

**SPAR** 

Your tastiest  
Summer  
ever...

*There for you*

10 HIGH STREET  
LEDBURY

**WE ARE OPEN**

MONDAY - SATURDAY

7.30am - 10.30pm

SUNDAY 8am - 10.30pm

Refresh yourself with our 'Real Deals'  
at your 'Local Spar' this Summer

**LDA MEATS LTD**

**PURVEYORS AND SUPPLIERS  
OF LOCALLY PRODUCED  
BEEF - PORK - LAMB & POULTRY**

*We are traditional meat suppliers to over  
100 catering establishments across  
Herefordshire and Worcestershire*

We also have a brand new retail outlet  
now open with fantastic deals available  
For Price Lists - Catering or Retail

**VISIT OUR PIG ROAST  
ON CARNIVAL DAY**

*LDA Meats Ltd*

*Lynden Business Park*

*Lower Road*

*Ledbury - Herefordshire HR8 2DJ*

*Tel (01531) 634382 Fax (01531) 631007*